

# C-Twist-151



*your color story*

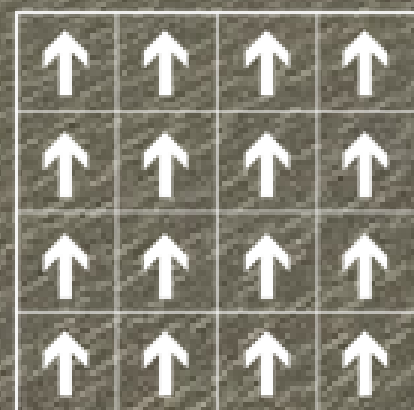
## PATTERNS

50cm x 50cm

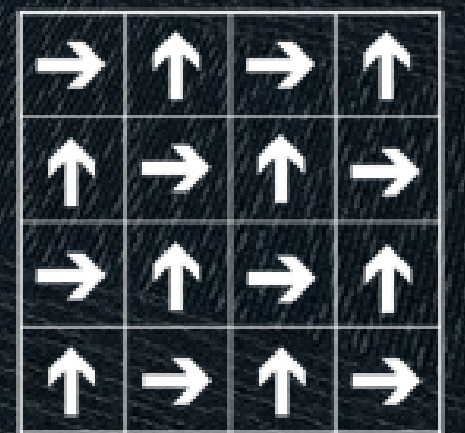
### INDEX

### PAGE

C-Twist - 152001	2
C-Twist - 152002	3
C-Twist - 152003	4
C-Twist - 152004	5
C-Twist - 152005	6
C-Twist - 152006	7
C-Twist - 152007	8
C-Twist - 152009	9
C-Twist - 1520011	10
Colours	11
Specification	

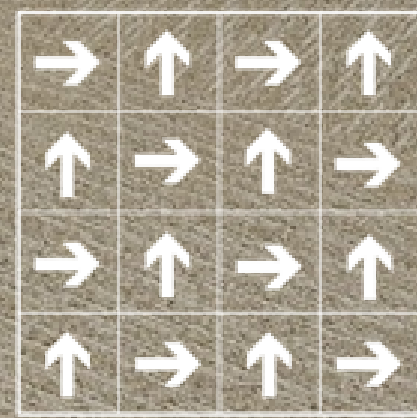


C-Twist - 152002

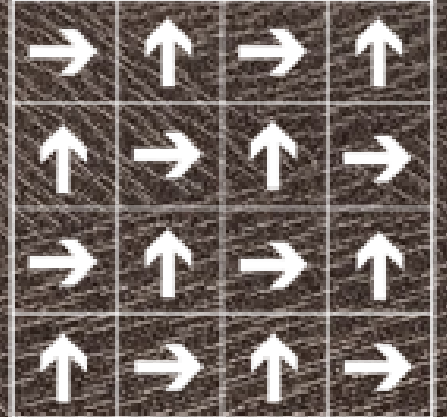


C-Twist - 152003



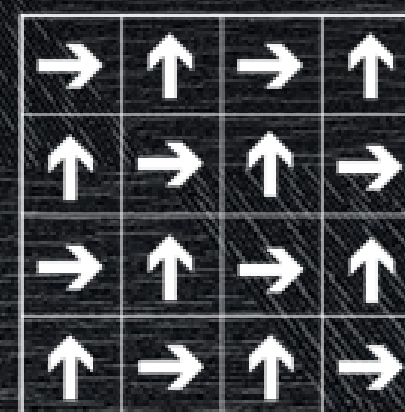


C-Twist - 152004

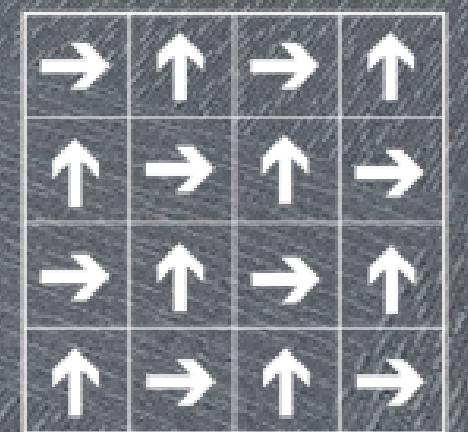


C-Twist - 152005



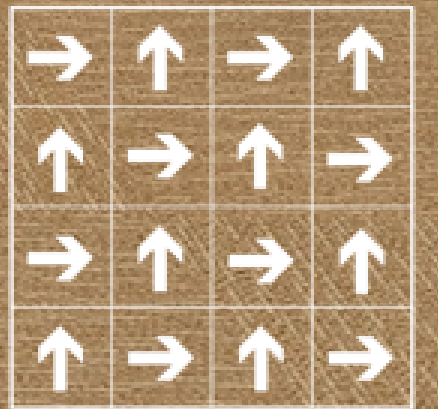


C-Twist - 152006



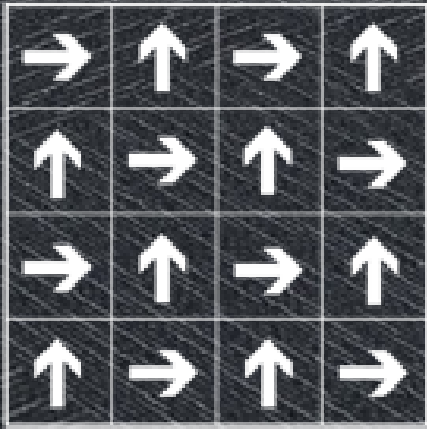
C-Twist - 152007





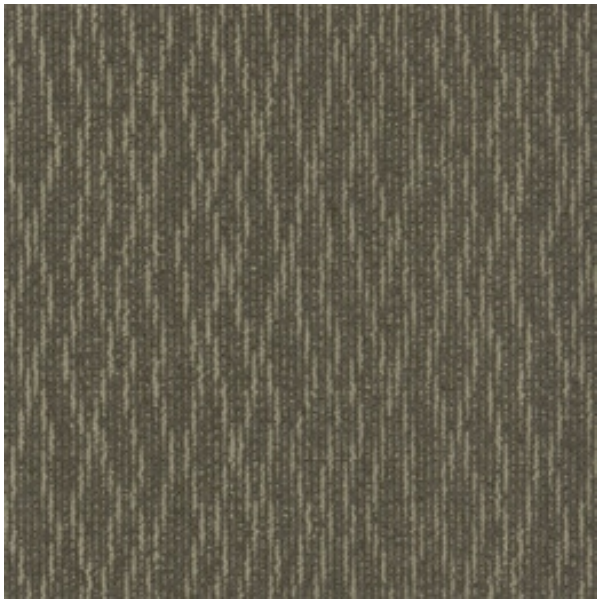
C-Twist - 152009



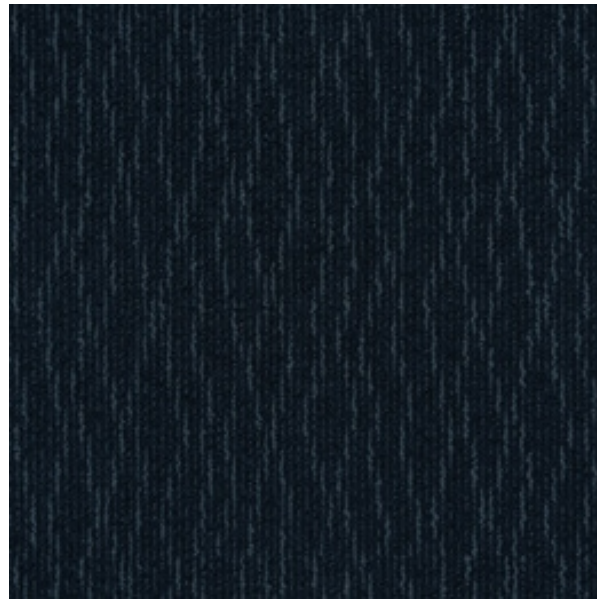


C-Twist - 152011





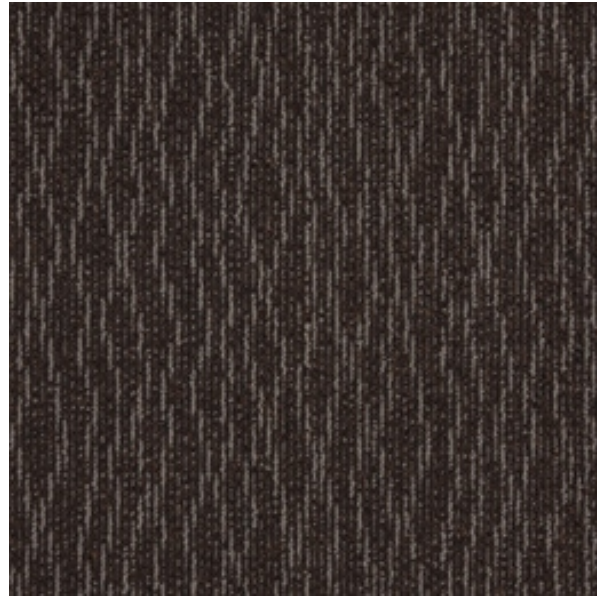
C-Twist - 152002



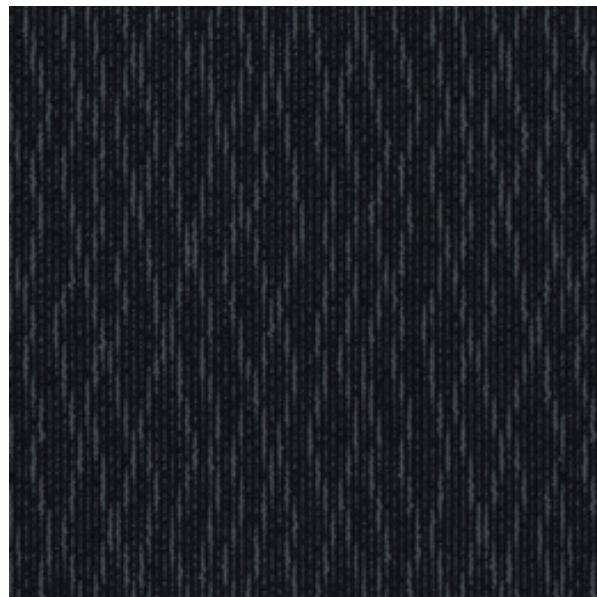
C-Twist - 152003



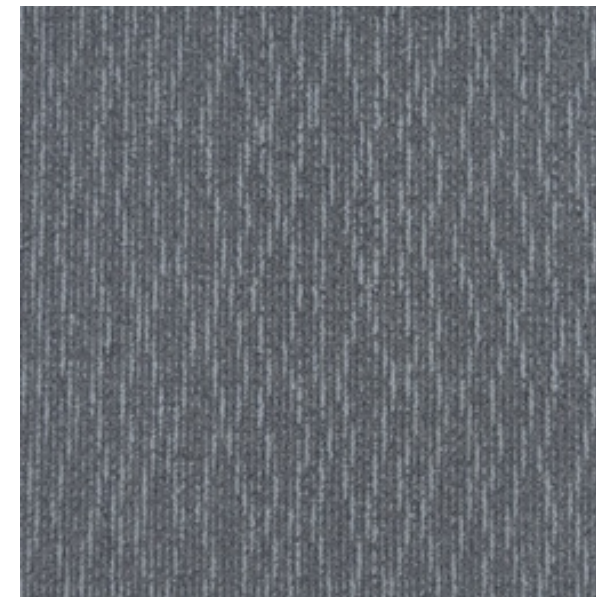
C-Twist - 152004



C-Twist - 152005



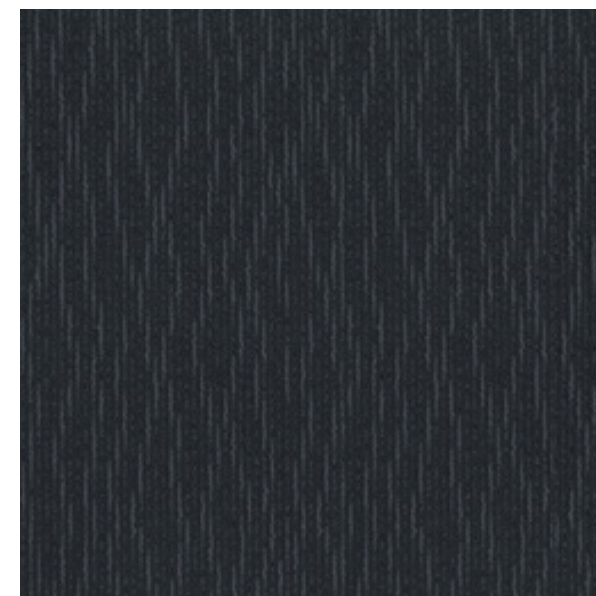
C-Twist - 152006



C-Twist - 152007



C-Twist - 152009



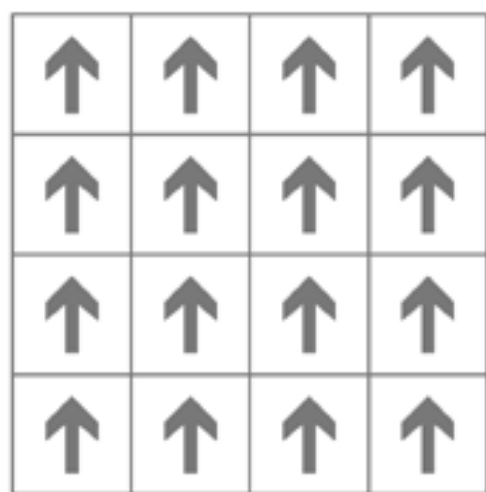
C-Twist - 152011



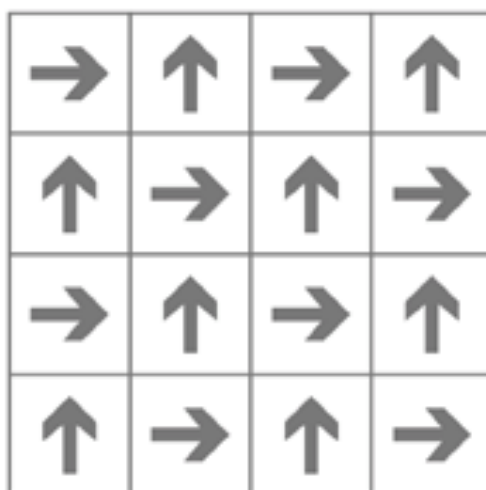
## Specification

Product Name	C-Twist - 151
Product Code	C-Twist - 151
Tufted construction	Multi-level Loop
Fiber	100% Nylon
Dye method	Solution Dyed
Gauge	1/12
Tufted weight(g/m <sup>2</sup> )	550 ± 5%
Tile size(mm)	500 x 500
Pile height(mm)	4.0 ± 0.5
Total thickness(mm)	6.5 ± 0.5
Standard Backing	Glass fiber reinforced PVC

## Recommended installation methods



Monolithic



Quarter-Turn

